



BUSSOLE DI RIDUZIONE

REDUCTION BUSHES



I Le bussole di riduzione con battuta consentono il fissaggio di barenì o punte con codolo cilindrico o a cono morse su portautensili di macchine a controllo numerico.

La nostra produzione delle bussole si articola su quattro tipi differenti:

- 1- bussola con fissaggio dell'utensile a mezzo di grani
- 2- bussola asolata con fissaggio diretto dell'utensile
- 3- bussola cilindrica
- 4- bussola conica
- 5- bussola elastica

Per ogni tipo sono previste diverse grandezze formando così una gamma completa che può soddisfare le più svariate esigenze.

GB The reduction bushes with flanges allow boring bars or drills with a cylindrical shaft or clamp cone to be fixed to the toolholders of numerically controlled machine tools.

Five different types of bushes are available:

- 1- bushes to be fixed to tool by means of dowels
- 2- slotted bushes to be directly fastened to tool
- 3- cylindrical bushes
- 4- conical bushes
- 5- elastic bushes

We manufacture each type in different sizes in order to offer a complete range capable of meeting every need.

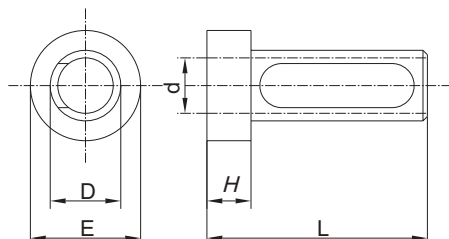




BUSSOLE CILINDRICHE

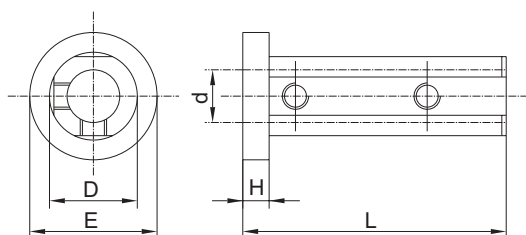
CYLINDRICAL BUSHES

D = 16 mm

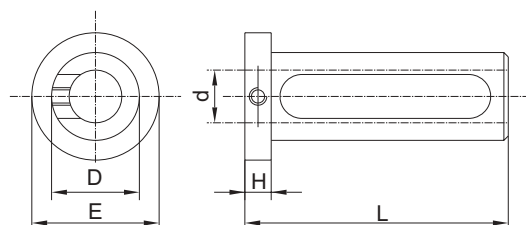


COD. ART	D	d	L	H	E
B16-06-50	16	6	50	5	20
B16-08-50	16	8	50	5	20
B16-10-50	16	10	50	5	20
B16-12-50	16	12	50	5	20

D = 19,05 mm (3/4")

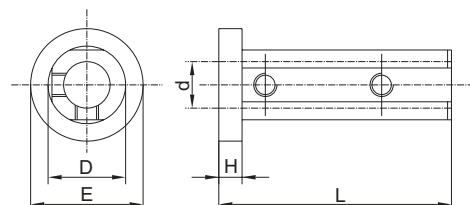


COD. ART	D	d	L	H	E
B19,05-06-60	19,05	6	60	6	27
B19,05-08-60	19,05	8	60	6	27
B19,05-10-60	19,05	10	60	6	27

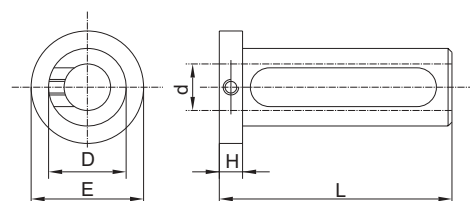


COD. ART	D	d	L	H	E
B19,05-12-60	19,05	12	60	10	27
B19,05-14-60	19,05	14	60	10	27
B19,05-16-60	19,05	16	60	10	27

D = 20 mm



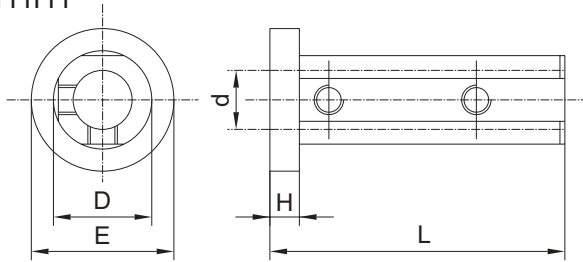
COD. ART	D	d	L	H	E
B20-06-60	20	6	60	6	27
B20-08-60	20	8	60	6	27
B20-10-60	20	10	60	6	27



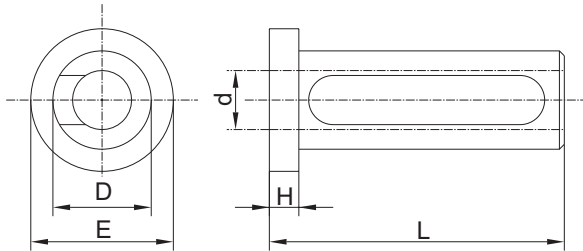
COD. ART	D	d	L	H	E
B20-12-60	20	12	60	10	27
B20-14-60	20	14	60	10	27
B20-16-60	20	16	60	10	27



D = 22 mm

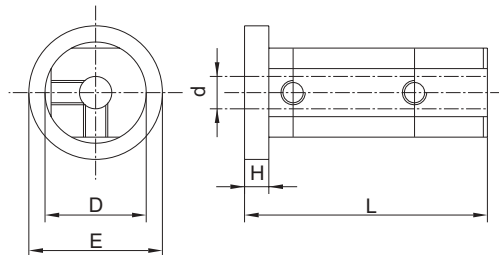


COD. ART	D	d	L	H	E
B22-06-60	22	6	60	6	28
B22-08-60	22	8	60	6	28
B22-10-60	22	10	60	6	28

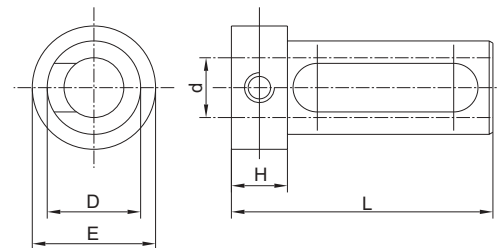


COD. ART	D	d	L	H	E
B22-12-60	22	12	60	6	28
B22-14-60	22	14	60	6	28
B22-16-60	22	16	60	6	28

D = 25 mm

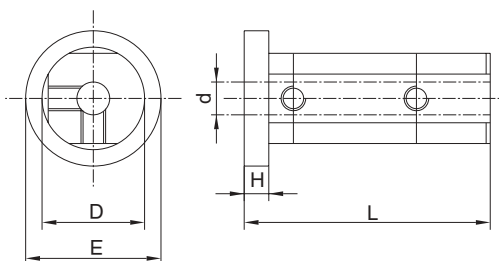


COD. ART	D	d	L	H	E
B25-06-60	25	6	60	6	33
B25-08-60	25	8	60	6	33
B25-10-60	25	10	60	6	33
B25-12-60	25	12	60	6	33

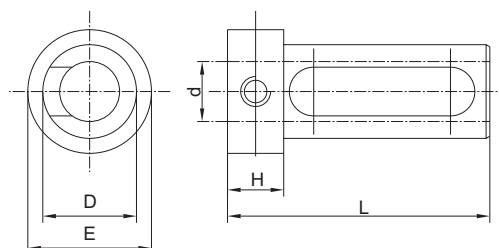


COD. ART	D	d	L	H	E
B25-14-70	25	14	70	13	33
B25-16-70	25	16	70	13	33
B25-18-70	25	18	70	13	33
B25-20-70	25	20	70	13	33

D = 25,40 mm (1")



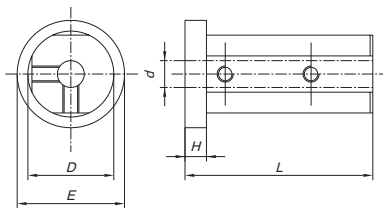
COD. ART	D	d	L	H	E
B25,40-06-60	25,40	6	60	6	33
B25,40-08-60	25,40	8	60	6	33
B25,40-10-60	25,40	10	60	6	33
B25,40-12-60	25,40	12	60	6	33



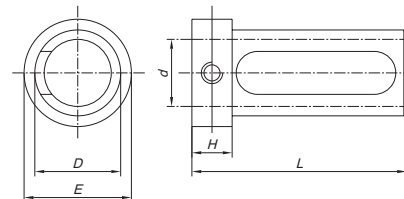
COD. ART	D	d	L	H	E
B25,40-14-70	25,40	14	70	13	33
B25,40-16-70	25,40	16	70	13	33
B25,40-18-70	25,40	18	70	13	33
B25,40-20-70	25,40	20	70	13	33



D = 31,75 mm (1 1/4")

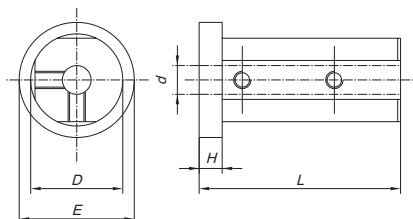


COD. ART	D	d	L	H	E
B31,75-06-60	31,75	6	60	6	39
B31,75-08-70	31,75	8	70	8	39
B31,75-10-70	31,75	10	70	8	39
B31,75-12-70	31,75	12	70	8	39
B31,75-14-70	31,75	14	70	8	39
B31,75-16-70	31,75	16	70	8	39
B31,75-18-70	31,75	18	70	8	39
B31,75-20-70	31,75	20	70	8	39

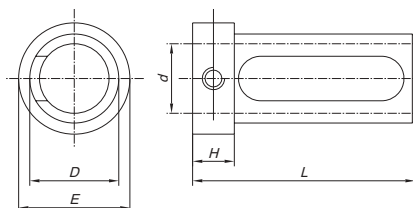


COD. ART	D	d	L	H	E
B31,75-25-80	31,75	25	80	15	39

D = 32 mm

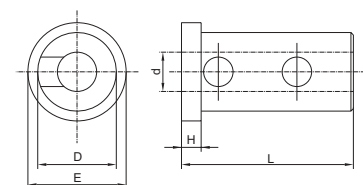


COD. ART	D	d	L	H	E
B32-06-60	32	6	60	6	39
B32-08-70	32	8	70	8	39
B32-10-70	32	10	70	8	39
B32-12-70	32	12	70	8	39
B32-14-70	32	14	70	8	39
B32-16-70	32	16	70	8	39
B32-18-70	32	18	70	8	39
B32-20-70	32	20	70	8	39



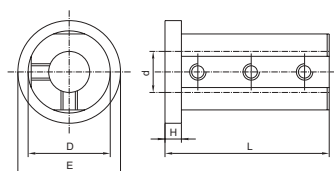
COD. ART	D	d	L	H	E
B32-25-80	32	25	80	15	39

D = 35 mm

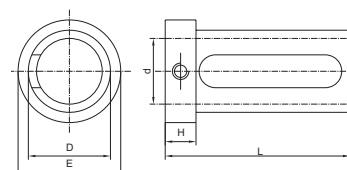


COD. ART	D	d	L	H	E
B35-08-80	35	8	80	8	44
B35-10-80	35	10	80	8	44
B35-12-80	35	12	80	8	44
B35-16-80	35	16	80	8	44
B35-20-80	35	20	80	8	44
B35-25-80	35	25	80	8	44
B35-32-80	35	32	80	8	44

D = 40 mm



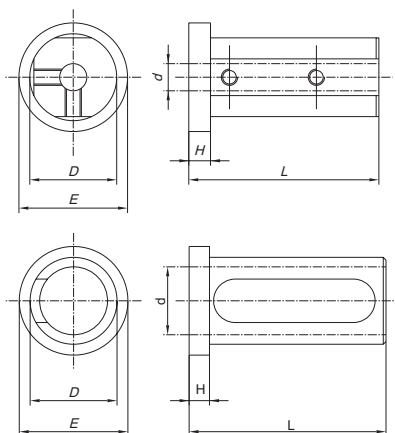
COD. ART	D	d	L	H	E
B40-06-60	40	6	60	6	49
B40-08-80	40	8	80	8	49
B40-10-80	40	10	80	8	49
B40-12-80	40	12	80	8	49
B40-14-80	40	14	80	8	49
B40-16-80	40	16	80	8	49
B40-18-80	40	18	80	8	49
B40-20-80	40	20	80	8	49
B40-25-80	40	25	80	8	49



COD. ART	D	d	L	H	E
B40-32-90	40	32	90	15	49



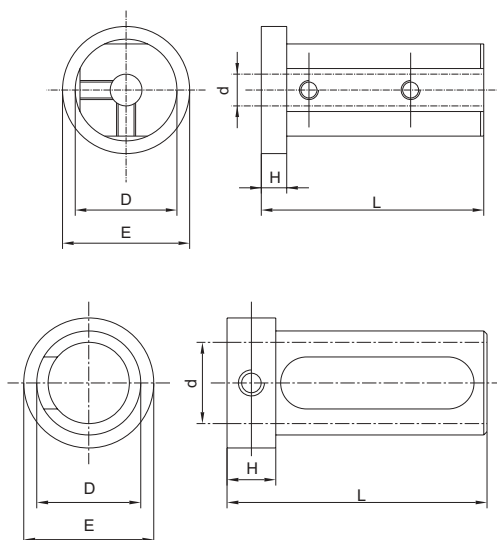
D = 45 mm



COD. ART	D	d	L	H	E
B45-08-80	45	8	80	8	54
B45-10-80	45	10	80	8	54
B45-12-80	45	12	80	8	54
B45-16-80	45	16	80	8	54
B45-20-80	45	20	80	8	54
B45-25-80	45	25	80	8	54

COD. ART	D	d	L	H	E
B45-32-80	45	32	80	8	54
B45-40-80	45	40	80	8	54

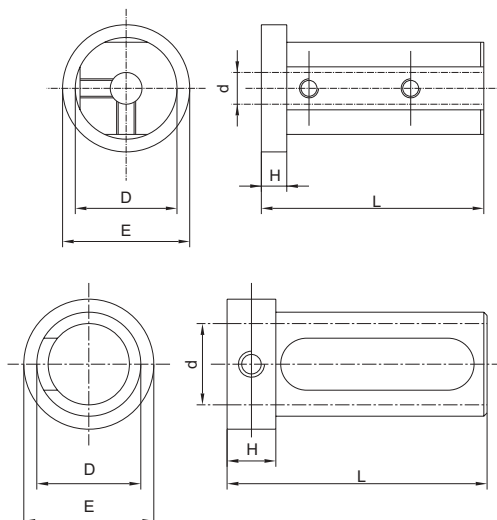
D = 50 mm



COD. ART	D	d	L	H	E
B50-08-90	50	8	90	8	59
B50-10-90	50	10	90	8	59
B50-12-90	50	12	90	8	59
B50-14-90	50	14	90	8	59
B50-16-90	50	16	90	8	59
B50-18-90	50	18	90	8	59
B50-20-90	50	20	90	8	59
B50-25-90	50	25	90	8	59
B50-32-90	50	32	90	8	59

COD. ART	D	d	L	H	E
B50-40-100	50	40	100	15	59

D = 60 mm



COD. ART	D	d	L	H	E
B60-12-80	60	12	97	8	69
B60-16-80	60	16	97	8	69
B60-20-80	60	20	97	8	69
B60-25-80	60	25	97	8	69
B60-32-80	60	32	97	8	69

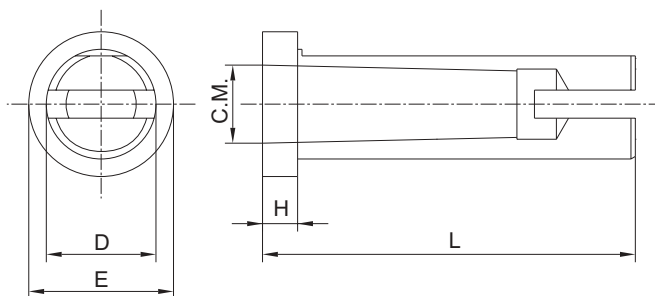
COD. ART	D	d	L	H	E
B60-40-97	60	40	97	8	69
B60-50-97	60	50	97	8	69



BUSSOLE CONICHE

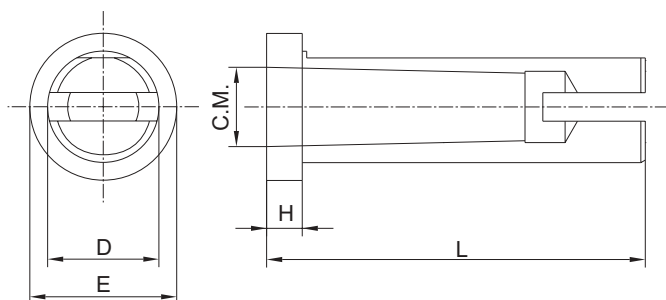
CONICAL BUSHES

D = 25 mm



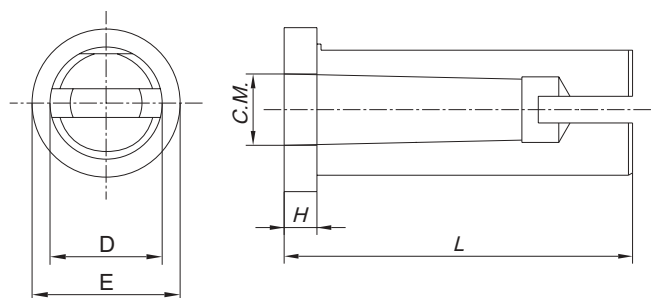
COD. ART	D	CM	L	H	E
BC25-01-65	25	1	65	6	33
BC25-02-78	25	2	78	8	33

D = 25,40 mm (1")



COD. ART	D	CM	L	H	E
BC25,40-01-65	25,40	1	65	6	33
BC25,40-02-78	25,40	2	78	8	33

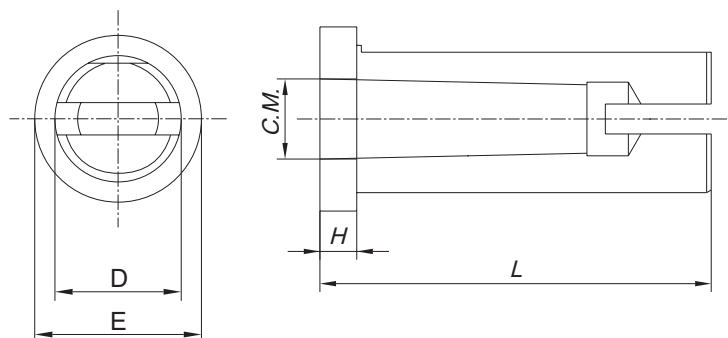
D = 31,75 mm (1 1/4")



COD. ART	D	CM	L	H	E
BC31,75-01-65	31,75	1	65	6	39
BC31,75-02-78	31,75	2	78	8	39
BC31,75-03-97	31,75	3	97	8	39

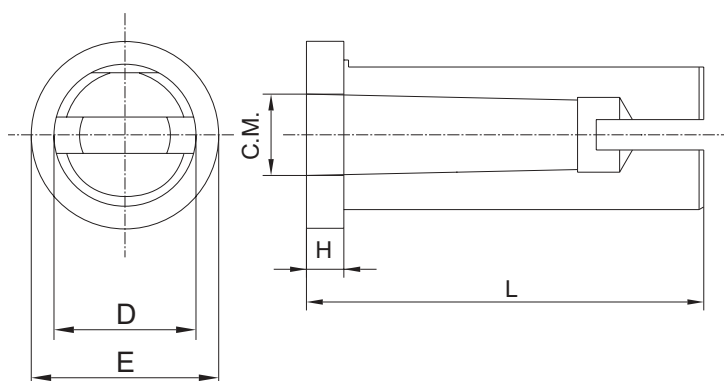


D = 32 mm



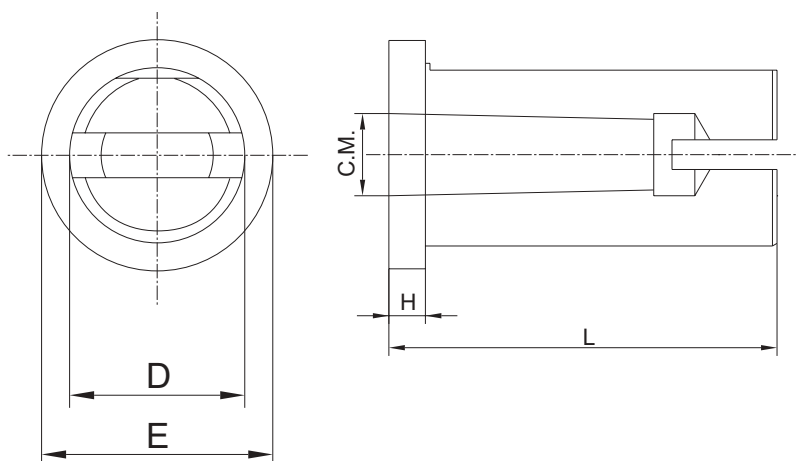
COD. ART	D	CM	L	H	E
BC32-01-65	32	1	65	6	39
BC32-02-78	32	2	78	8	39
BC32-03-97	32	3	97	8	39

D = 35 mm



COD. ART	D	CM	L	H	E
BC35-01-65	35	1	65	6	44
BC35-02-78	35	2	78	8	44
BC35-03-97	35	3	97	8	44

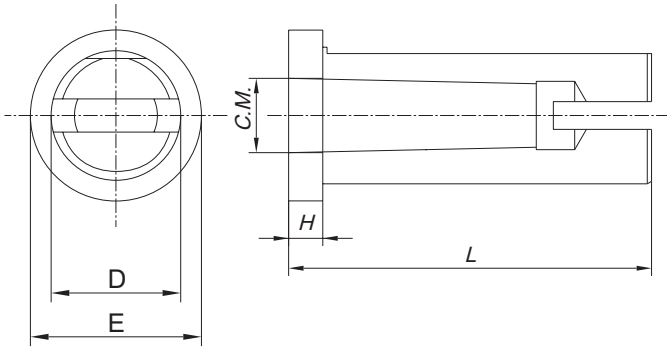
D = 40 mm



COD. ART	D	CM	L	H	E
BC40-01-65	40	1	65	6	49
BC40-02-78	40	2	78	8	49
BC40-03-97	40	3	97	8	49
BC40-04-120	40	4	120	8	49

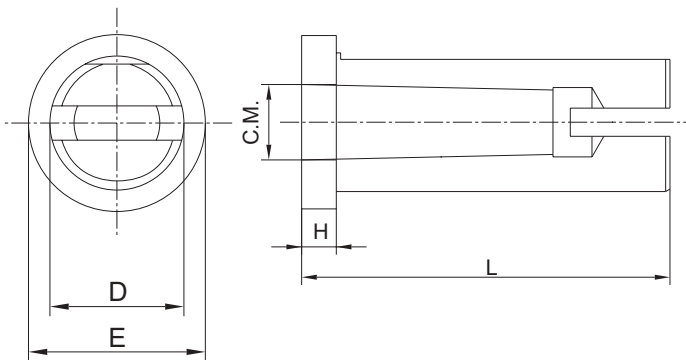


D = 45 mm



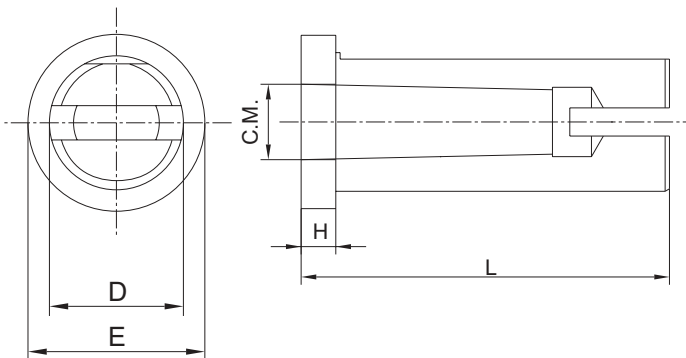
COD. ART	D	CM	L	H	E
BC45-02-78	45	2	78	8	54
BC45-03-97	45	3	97	8	54
BC45-04-120	45	4	120	8	54

D = 50 mm



COD. ART	D	CM	L	H	E
BC50-02-78	50	2	78	8	59
BC50-03-97	50	3	97	8	59
BC50-04-120	50	4	120	8	59

D = 60 mm

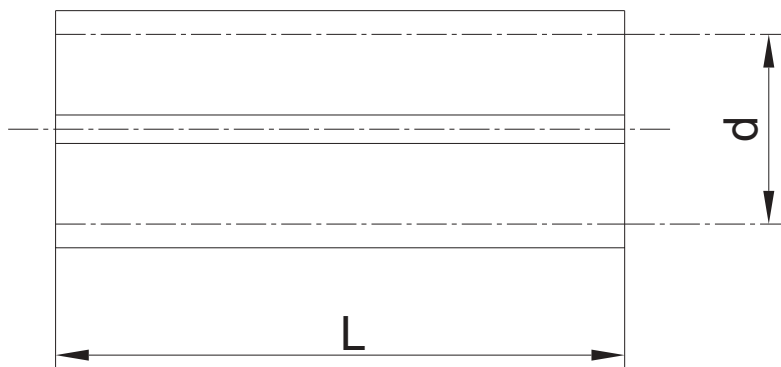
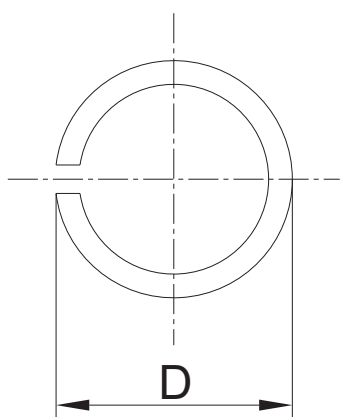


COD. ART	D	CM	L	H	E
BC60-02-78	60	2	78	8	69
BC60-03-97	60	3	97	8	69
BC60-04-120	60	4	120	8	69
BC60-05-155	60	5	155	8	69



BUSSOLE ELASTICHE

ELASTIC BUSHES



COD. ART	D	d	L
BE-16-12-40	16	12	40
BE-20-16-50	20	16	50
BE-25-20-60	25	20	60
BE-32-25-70	32	25	70
BE-40-32-80	40	32	80
BE-50-40-90	50	40	90





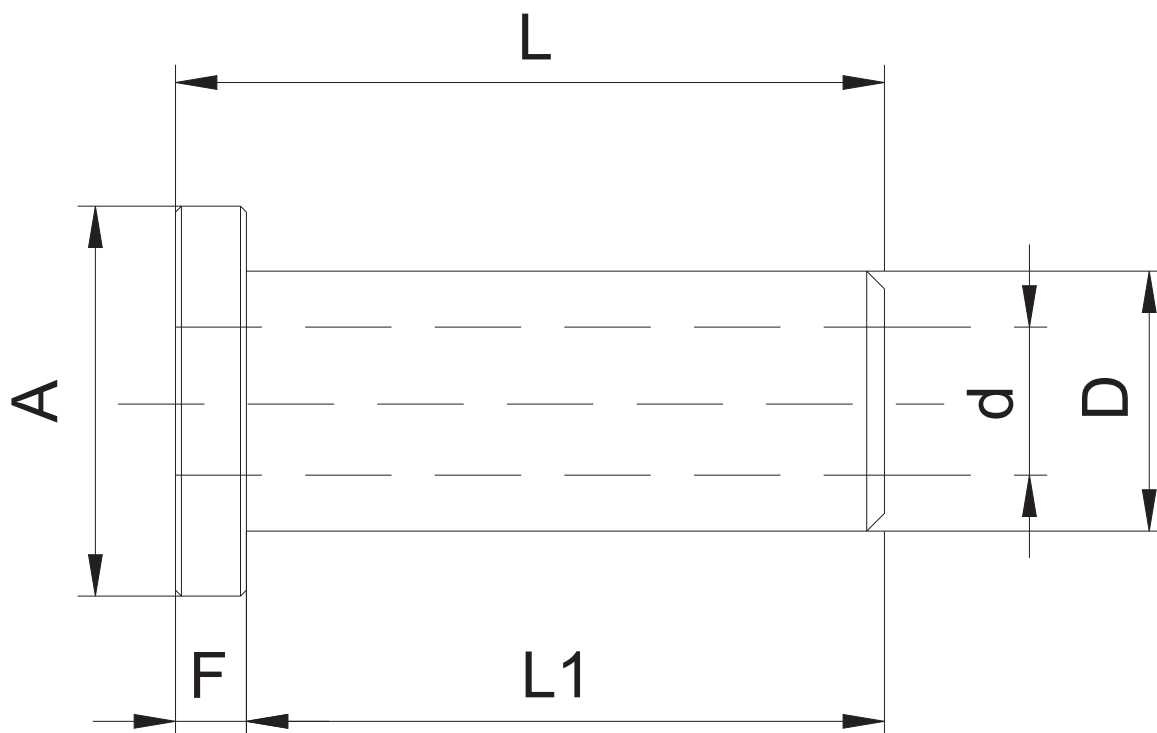
BUSSOLE SPECIALI

SPECIAL BUSHES

I Se siete interessati a Bussole speciali non comprese nel presente catalogo, inviateci questa pagina debitamente compilata: sarà nostra cura servirVi al meglio e con la massima tempestività.

GB If you are interested in special Bushes not included in this catalogue, fill out this page and send it to us: we shall do our best to provide you with prompt, efficient service.

Disegno tecnico da compilare per richiesta Bussole speciali
Technical drawing to be filled out for requesting special Bushes.



A	d	D	F	L	L1			