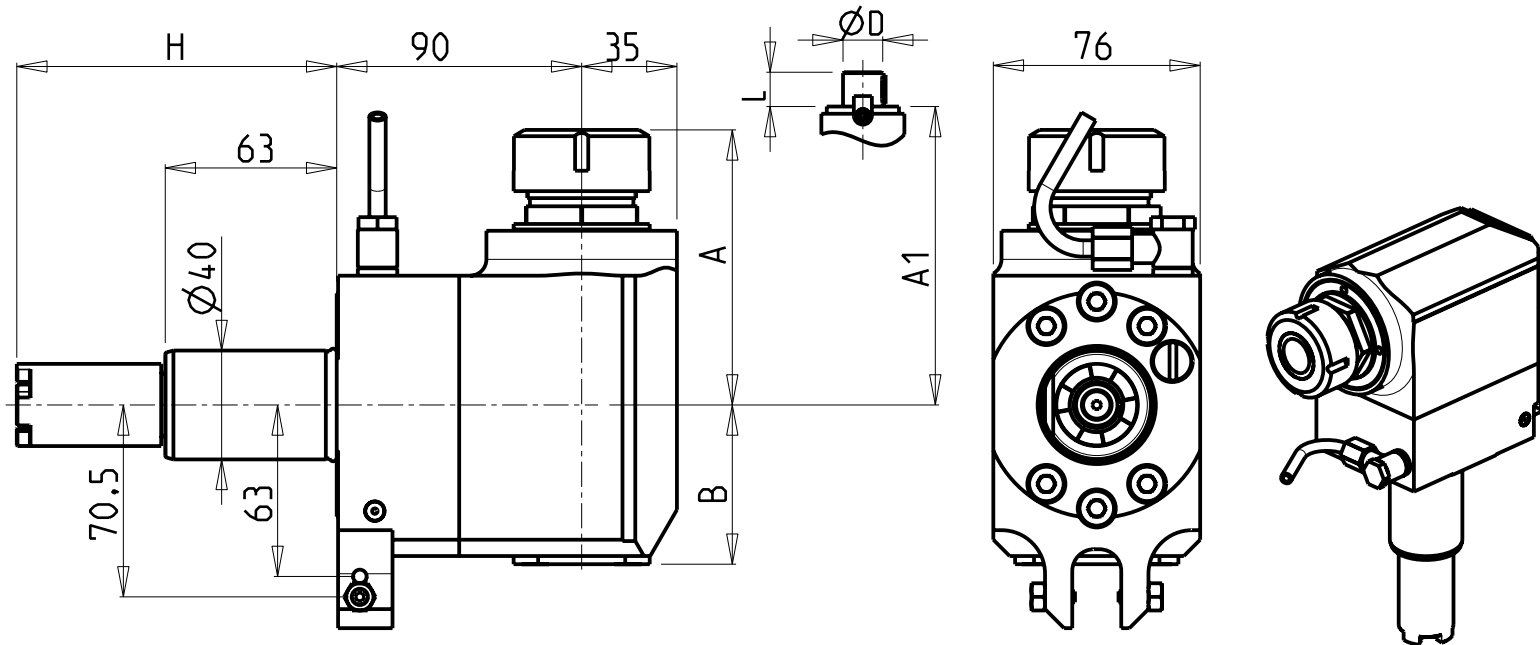


ATTENZIONE - ATTENTION - ACHTUNG

- Per lo smontaggio degli utensili utilizzare sempre la chiave di contrasto come indicato nel manuale d'uso.
- For disassembly of the tools use always the contrast key as mentioned in the user instructions.
- Fuer das Abmontieren der Werkzeuge immer den Gegenschlüssel benutzen wie in der Bedienungsanleitung erwäehnt.



- Chiave inclusa
- Key included
- Schlüssel inbegriffen

Cod. MT	Mandrino Spindle Spindel	I	RPM	Coppia Max Max Torque Max Drehmoment	Lubrificazione int. Coolant through Innenkühlung	Lubrificazione est. Ext. coolant Aussenkühlung	A	A1	B	H	Tipo Torretta Turret type Revolver typ	CHIAVI NON INCLUSE Keys not included Schlüssel nicht einbegriffen	
HAS0130132	ER32	1:1	4000	70Nm		X	101.1	-	58.5	104.85	VDI STANDARD	CHUB41	CHSTER32
HAS0130232	ER32	1:1	4000	70Nm	P=70bar	X	101.1	-	82	104.85	VDI STANDARD	CHUB41	CHSTER32
HAS0132219	Ø22x19	1:1	4000	70Nm		X	-	78.5	58.5	104.85	VDI STANDARD	CHUB41	CH_VTCROCE_M10 *
HAS0132721	Ø27x21	1:1	4000	70Nm		X	-	78.5	58.5	104.85	VDI STANDARD	CHUB41	CH_VTCROCE_M12 *
HAS0140132	ER32	1:1	4000	70Nm		X	101.1	-	58.5	117.55	HYBRID TURRET	CHUB41	CHSTER32
HAS0140232	ER32	1:1	4000	70Nm	P=70bar	X	101.1	-	82	117.55	HYBRID TURRET	CHUB41	CHSTER32
HAS0142219	Ø22x19	1:1	4000	70Nm		X	-	78.5	58.5	117.55	HYBRID TURRET	CHUB41	CH_VTCROCE_M10 *
HAS0142721	Ø27x21	1:1	4000	70Nm		X	-	78.5	58.5	117.55	HYBRID TURRET	CHUB41	CH_VTCROCE_M12 *

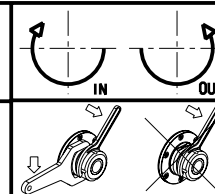
HAAS

MOD: SL10/20/30

MODULO MOTORIZZATO RADIALE VDI40 INT. 90 mm

Radial driven tool VDI40 90mm interaxis.

Radial angetriebenes Werkzeug VDI40 int. 90 mm



M.T. srl

Via Casino Albini 480
Tel. 0541/956034-957884

Fax 0541/956341

47842 S. GIOVANNI IN M. (RN)

e-mail: mtma@mtmarchetti.com

http://www.mtmarchetti.com

PRODUZIONE MODULI ROTANTI



PAGINA HAS013-1-20