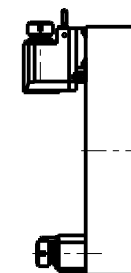


ATTENZIONE - ATTENTION - ACHTUNG

- Per lo smontaggio degli utensili utilizzare sempre la chiave di contrasto come indicato nel manuale d'uso.
- For disassembly of the tools use always the contrast key as mentioned in the user instructions.
- Fuer das Abmontieren der Werkzeuge immer den Gegenschlüssel benutzen wie in der Bedienungsanleitung erwaeht.

TORRETTE ASSIALI AXIAL TURRETS AXIAL REVOLVER



- Chiave inclusa
- Key included
- Schluessel inbegriffen

| Cod. MT | Mandrino Spindle Spindel | I | RPM | Coppia Max Max Torque Max Drehmoment | Lubrificazione int. Coolant through Innenkuhlung | Lubrificazione est. Ext. coolant Aussenkuhlung | A | A1 | B | D | L | CHIAVI NON INCLUDE Keys not included Schluessel nicht einbegriffen | |
|------------|--------------------------|-----|------|--------------------------------------|--|--|-------|------|------|----|----|--|----------------|
| OKU0040332 | ER32 | 1:1 | 4000 | 70Nm | - | X | 99.7 | - | 58.5 | - | - | OKU0650004 | CHSTER32 |
| OKU0040432 | ER32 | 1:1 | 4000 | 70Nm | P=70bar | X | 99.7 | - | 69.5 | - | - | OKU0650004 | CHSTER32 |
| OKU0040340 | ER40 | 1:1 | 4000 | 70Nm | - | X | 103.7 | - | 58.5 | - | - | OKU0650004 | CHSTER40 |
| OKU0040440 | ER40 | 1:1 | 4000 | 70Nm | P=70bar | X | 103.7 | - | 69.5 | - | - | OKU0650004 | CHSTER40 |
| OKU0041022 | Ø22x19 | 1:1 | 4000 | 70Nm | - | X | - | 78.5 | 58.5 | 22 | 19 | CHUB41 | CH_VTCROCE_M10 |
| OKU0041027 | Ø27x21 | 1:1 | 4000 | 70Nm | - | X | - | 78.5 | 58.5 | 27 | 21 | CHUB41 | CH_VTCROCE_M12 |

OKUMA

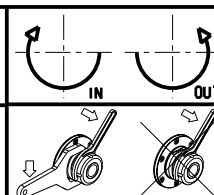
MOD: LB25/400 - LR25 - LU25M - LU400M

MODULO MOTORIZZATO RADIALE VDI40 H=75mm

Radial driven tool VDI40 H=75mm

Radial angetriebenes Werkzeug VDI40 H=75mm

Subject to change without notice.



M.T. srl

Via Casino Albini 480
Tel. 0541/956034-957884
Fax 0541/956341
47842 S. GIOVANNI IN M. (RN)
e-mail: mtma@mtmarchetti.com
http://www.mtmarchetti.com



PAGINA OKU013-3-10

09/2023