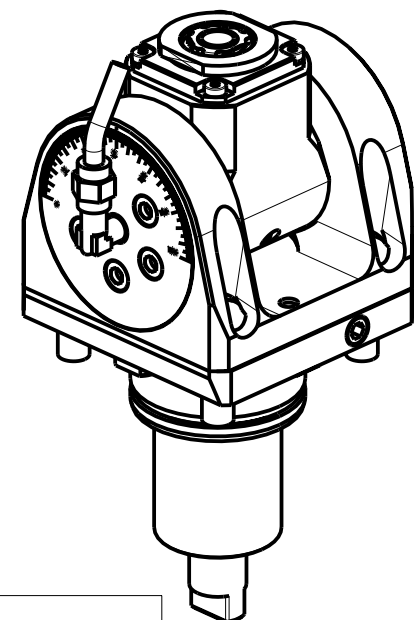


**ATTENZIONE - ATTENTION - ACHTUNG**

- Per lo smontaggio degli utensili utilizzare sempre la chiave di contrasto come indicato nel manuale d'uso.
- For disassembly of the tools use always the contrast key as mentioned in the user instructions.
- Fuer das Abmontieren der Werkzeuge immer den Gegenschlüssel benutzen wie in der Bedienungsanleitung erwaehnt.

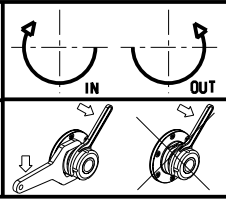


| Cod. MT    | Mandrino Spindle Spindel | I   | RPM   | Coppia Max Max Torque Max Drehmoment | Reversibile lato mandrino/contromandrino Reversible sub/main spindle side Umkehrbare Spindelsete/Gegenspindelsete | Lubrificazione int. Coolant through Innenkuehlung | Lubrificazione est. Ext. coolant Aussenkuehlung | CHIAVI INCLUSE Keys included Schluessel inbegriffen |        |            |         |
|------------|--------------------------|-----|-------|--------------------------------------|---|---|---|---|--------|------------|---------|
|            |                          |     |       |                                      |   |   |   | CHUB19_SP3  | CHUB32 | CHTAER16ZC | CHESLO7 |
| DW00660316 | ERA16                    | 1:2 | 12000 | 8Nm                                  | X   | -   | X   | CHUB19_SP3  | CHUB32 | CHTAER16ZC | CHESLO7 |
| DW00660416 | ERA16                    | 1:2 | 12000 | 8Nm                                  | X   | P=70bar   | X   | CHUB19_SP3  | CHUB32 | CHTAER16ZC | CHESLO7 |

**HW ACHEON**  
**CUTEX 160/180 - C1 (BMT55) - C2 (BMT55)**

MODULO MOTORIZZATO ORIENTABILE +/-90° MOLTIPLICATO I=1:2 H=47.5mm  
 +/-90° adjustable angle driven tool geared-up I=1:2 H=47.5mm  
 Angetriebenes Werkzeug schwenkbar +/-90° uebersetzt I=1:2 H=47.5mm

Subject to change without notice.



**M.T. srl**  
 Via Casino Albini 480  
 Tel. 0541/956034-957884  
 Fax 0541/956341  
 47842 S. GIOVANNI IN M. (RN)  
 e-mail: mtma@mtmarchetti.com  
 http://www.mtmarchetti.com



PAGINA HWC336-1-00