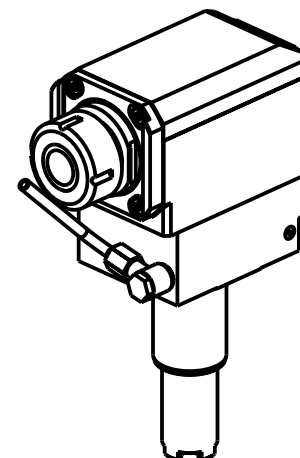
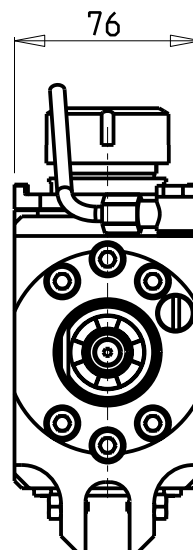
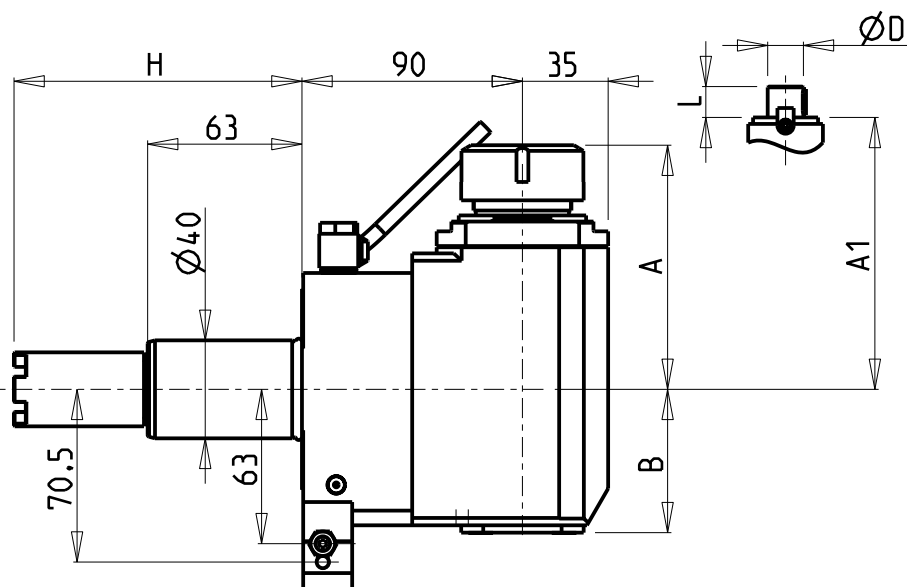


ATTENZIONE - ATTENTION - ACHTUNG

- Per lo smontaggio degli utensili utilizzare sempre la chiave di contrasto come indicato nel manuale d'uso.
- For disassembly of the tools use always the contrast key as mentioned in the user instructions.
- Fuer das Abmontieren der Werkzeuge immer den Gegenschlüssel benutzen wie in der Bedienungsanleitung erwaeht.



• Chiave inclusa

• Key included

• Schlüssel inbegriffen

| Cod. MT | Mandrino Spindle Spindel | I | RPM | Coppia Max Max Torque Max Drehmoment | Lubrificazione int. Coolant through Innenkühlung | Lubrificazione est. Ext. coolant Aussenkühlung | A | A1 | B | H | Tipo Torretta Turret type Revolver typ | CHIAVI NON INCLUSE Keys not included Schlüssel nicht einbegriffen | |
|------------|--------------------------------|-----|------|--|--|--|-------|------|------|--------|--|---|----------------|
| HAS0140132 | ER32 | 1:1 | 6000 | 70Nm | - | X | 99.7 | - | 58.5 | 117.55 | VDI STANDARD / HYBRID TURRET | OKU0650004 | CHSTER32 |
| HAS0140232 | ER32 | 1:1 | 6000 | 70Nm | P=70bar | X | 99.7 | - | 69.5 | 117.55 | VDI STANDARD / HYBRID TURRET | OKU0650004 | CHSTER32 |
| HAS0140140 | ER40 | 1:1 | 6000 | 70Nm | - | X | 103.7 | - | 58.5 | 117.55 | VDI STANDARD / HYBRID TURRET | OKU0650004 | CHSTER40 |
| HAS0140240 | ER40 | 1:1 | 6000 | 70Nm | P=70bar | X | 103.7 | - | 69.5 | 117.55 | VDI STANDARD / HYBRID TURRET | OKU0650004 | CHSTER40 |
| HAS0142219 | Ø22x19 | 1:1 | 6000 | 70Nm | - | X | - | 78.5 | 58.5 | 117.55 | VDI STANDARD / HYBRID TURRET | CHUB41 | CH_VTCROCE_M10 |
| HAS0142721 | Ø27x21 | 1:1 | 6000 | 70Nm | - | X | - | 78.5 | 58.5 | 117.55 | VDI STANDARD / HYBRID TURRET | CHUB41 | CH_VTCROCE_M12 |

HAAS

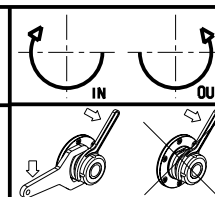
MOD: ST10/15/20/25/30/35 - DS30 - TL15/25

MODULO MOTORIZZATO RADIALE VDI40

Radial driven tool VDI40

Radial angetriebenes Werkzeug VDI40

Subject to change without notice.



M.T. srl

Via Casino Albini 480

Tel. 0541/956034-957884

Fax 0541/956341

47842 S. GIOVANNI IN M. (RN)

e-mail: mtma@mtmarchetti.com

http://www.mtmarchetti.com



PAGINA HAS013-3-20

09/2023