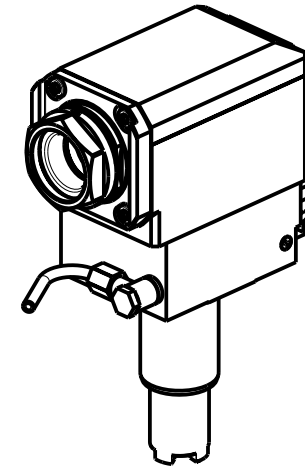
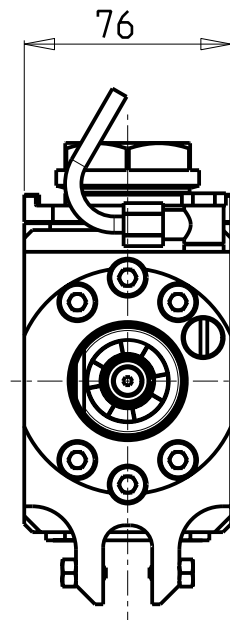
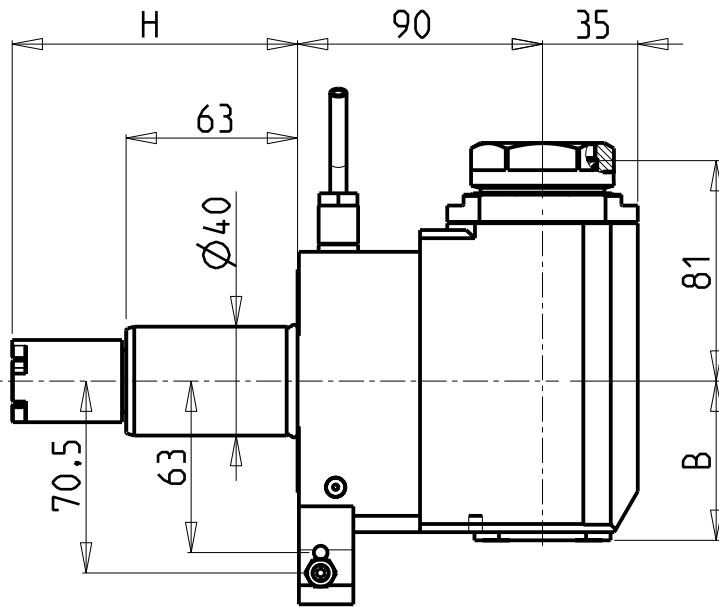


**ATTENZIONE - ATTENTION - ACHTUNG**

- Per lo smontaggio degli utensili utilizzare sempre la chiave di contrasto come indicato nel manuale d'uso.
- For disassembly of the tools use always the contrast key as mentioned in the user instructions.
- Fuer das Abmontieren der Werkzeuge immer den Gegenschlüssel benutzen wie in der Bedienungsanleitung erwaeht.

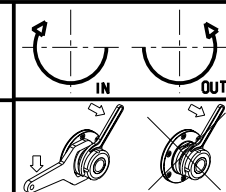


PER PORTAUTENSILI MODULARI MTSK-40 VEDI PAG. TBL300-1-40  
 FOR MTSK-40 QUICK CHANGE TOOLHOLDERS CLAMPINGS SEE PAGE TBL300-1-40  
 FUER MTSK-40 MODULARE WERKZEUGAUFNAHMEN SIEHE SEITE TBL300-1-40

Cod. MT	Mandrino Spindle Spindel	I	RPM	Coppia Max Max Torque Max Drehmoment	Lubrificazione int. Coolant through Innenkuehlung	Lubrificazione est. Ext. coolant Aussenkuehlung	B	H	Tipo Torretta Turret type Revolver typ	CHIAVI NON INCLUSE Keys not included Schluessel nicht einbegriffen	
HAS0270140	MTSK-40	1:1	6000	70Nm	-	X	58.5	104.85	VDI STANDARD	CHUB46	OKU0650004 ▪
HAS0270240	MTSK-40	1:1	6000	70Nm	P=70bar	X	69.5	104.85	VDI STANDARD	CHUB46	OKU0650004 ▪
HAS0280140	MTSK-40	1:1	6000	70Nm	-	X	58.5	117.55	HYBRID 12 TURRET	CHUB46	OKU0650004 ▪
HAS0280240	MTSK-40	1:1	6000	70Nm	P=70bar	X	69.5	117.55	HYBRID 12 TURRET	CHUB46	OKU0650004 ▪

- Chiave inclusa
- Key included
- Schluessel inbegriffen

HAAS  
 MOD: SL10/20/30  
 MODULO MOTORIZZATO RADIALE MTSK VD140  
 Radial MTSK driven tool VD140  
 Radial MTSK angetriebenes Werkzeug VD140



**M.T. srl**  
 Via Casino Albini 480  
 Tel. 0541/956034-957884  
 Fax 0541/956341  
 47842 S. GIOVANNI IN M. (RN)  
 e-mail: mtma@mtmarchetti.com  
 http://www.mtmarchetti.com



PAGINA HAS013-1-20-K

Subject to change without notice.