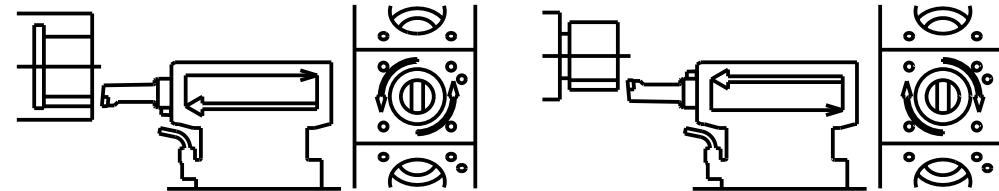
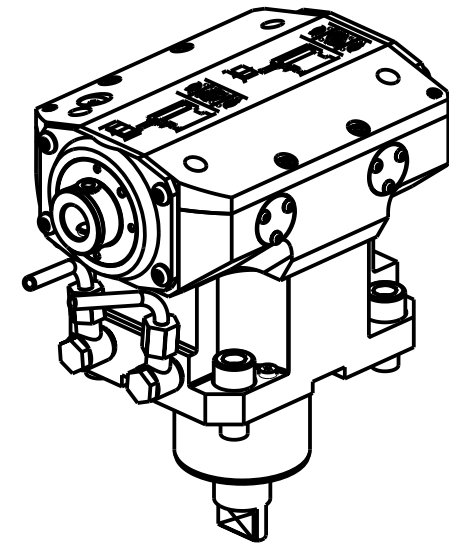
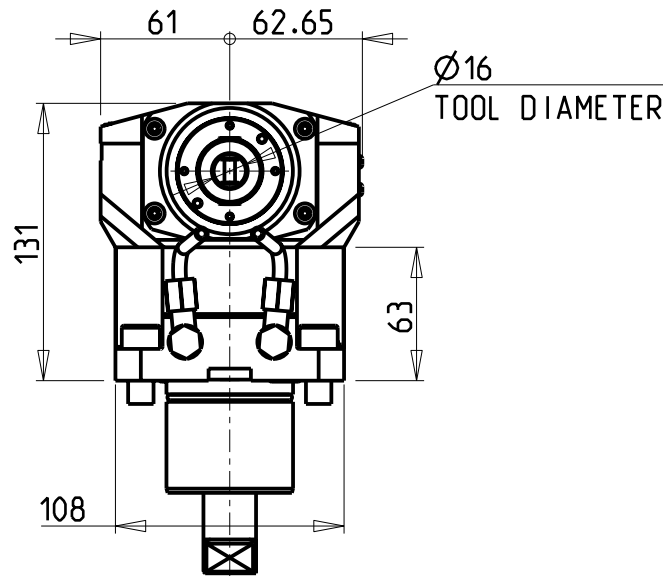
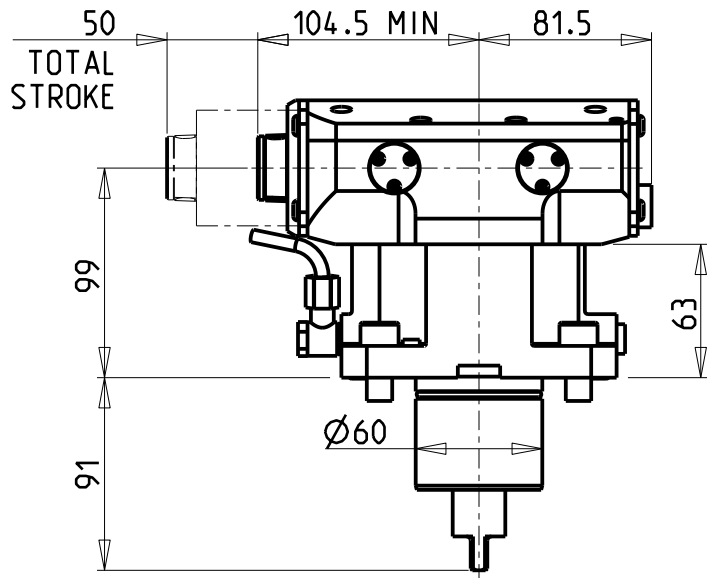
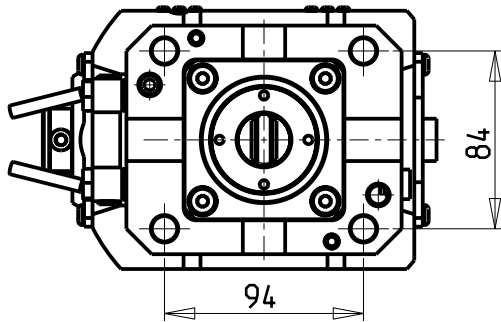


-COMPATIBILE CON UTENSILI COMMERCIALI AD INSERTI  
 -COMPATIBLE WITH COMMERCIAL INSERT CUTTING-TOOLS  
 -KOMPATIBEL MIT HANDELSÜBLICHEN SCHNEIDWERKZEUGEN

**ATTENZIONE - ATTENTION - ACHTUNG**

- VERIFICARE LE MISURE DI INGOMBRO PER POSSIBILE INTERFERENZA SU ALCUNI MODELLI DI MACCHINE
- Please check the overall sizes for possible interferences on some machine models
- Bitte überprüfen sie das ausmass um mögliche interferenzen auf einigen maschinen modellen zu vermeiden



| Cod. MT    | I   | RPM MAX | Reversibile lato mandrino/contromandrino<br>Reversible sub/main spindle side<br>Umkehrbare Spindelseite/<br>Gegenspindelseite | Lubr. esterna<br>Ext. coolant<br>Aussenkuehlung |
|------------|-----|---------|---|---|
| MNL1260100 | 1:1 | 500     | X   | X   |

NEW

**DMG-MORI**  
 NL1500/2000/2500/3000 12 STAZIONI - NLX1500/2000/2500/3000 12 STAZIONI - NLX4000 - NZL2000/2500 - NZX2500 (BMT60)  
 NT4200/4250/4300/5400 - NTX2000/2500/3000 2ND GEN. 10ST. - CTX2500 (BMT60)

**MODULO MOTORIZZATO BROCCIAATORE CORSA 50mm H=99mm**  
 Driven Broaching Toolholder 50mm stroke H=99mm  
 Angetriebenes Nutzenstoßwerkzeug 50mm Hub H=99mm

**M.T. srl**  
 Via Casino Albini 480  
 Tel. 0541/956034-957884  
 Fax 0541/956341  
 47842 S. GIOVANNI IN M. (RN)  
 e-mail: mtma@mtmarchetti.com  
 http://www.mtmarchetti.com



PAGINA MNL360-1-50

Subject to change without notice.

09/2023