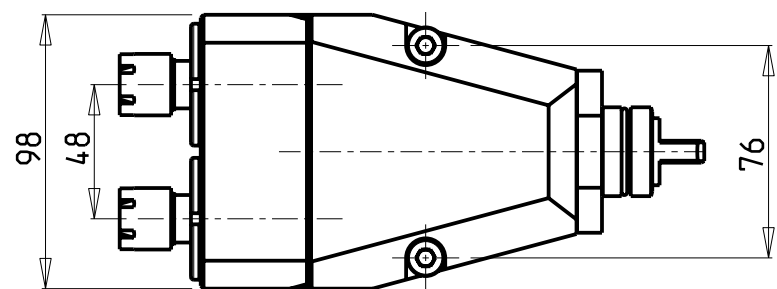
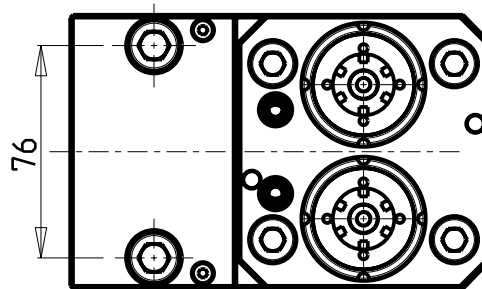
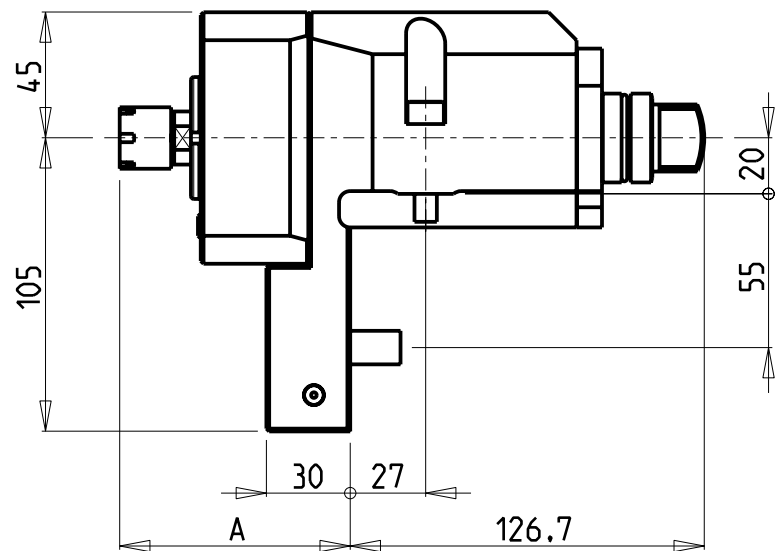
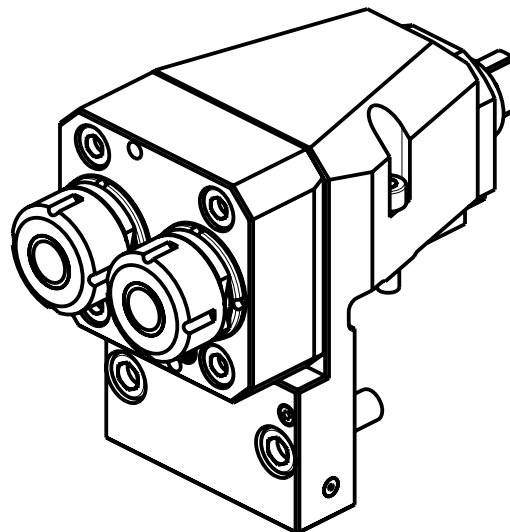


**ATTENZIONE - ATTENTION - ACHTUNG**

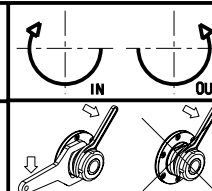
- Per lo smontaggio degli utensili utilizzare sempre la chiave di contrasto come indicato nel manuale d'uso.
- For disassembly of the tools use always the contrast key as mentioned in the user instructions.
- Fuer das Abmontieren der Werkzeuge immer den Gegenschlüssel benutzen wie in der Bedienungsanleitung erwaeht.



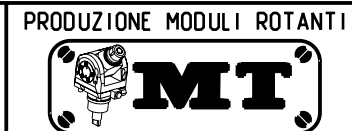
Cod. MT	Mandrino Spindle Spindel	I	RPM	Coppia Max Max Torque Max Drehmoment	Lubrificazione int. Coolant through Innenkuehlung	Lubrificazione est. Ext. coolant Aussenkuehlung	A	CHIAVI NON INCLUSE Keys not included Schluesssel nicht einbegriffen	
M0300016	ER16	1:1	6000	30Nm		X	82.5	CHUB17	CHMNER16
M0300025	ER25	1:1	6000	30Nm		X	82.96	MNL0210007	CHSTER25

CMZ  
 MOD: TL25AM/AMS/BM/BMS - TL20M/MS/TM  
 TC15M/Y/MS/MY - TC20M/Y/MS/MY - TC25M/Y/MS/MY - TC35M/Y/MS/MY

MODULO MOTORIZZATO RADIALE 2 USCITE SOVRAPPOSTE  
 Radial single side twin head driven tool  
 Radial angetriebenes Werkzeug 2 Ausgaenge ueberlagert



**M.T. srl**  
 Via Casino Albini 480  
 Tel. 0541/956034-957884  
 Fax 0541/956341  
 47842 S. GIOVANNI IN M. (RN)  
 e-mail: mtma@mtmarchetti.com  
 http://www.mtmarchetti.com



PAGINA CMZ080-2-00